



## Rugged Ridge H/D TJ Bolt on Tube Fenders

**Part Number: 12004.53 (Pair)**

**OFF-ROAD USE ONLY**

- Included Parts:** (1) 12004.51 – LH tube fender  
(1) 12004.52 – RH tube fender  
(1) LH side marker relocation bracket  
(1) RH side marker relocation bracket



**NOTE:** These fenders have been designed to be a true bolt in application with no cutting or drilling required. The fenders have been designed to use the factory inner fender liner with most application holes pre-drilled. Because these fenders are designed to be installed on any TJ from 1997-2006 not all inner fender mounting holes can be accounted for through the full 9 year production run, but all efforts have been made to make this fender swap as easy as possible.

The fenders have been supplied with relocation side marker mounting brackets. These brackets have been designed to allow the movement of the side market lamp to the front of fender. This is an optional item and has been supplied as a safety feature. These fenders have been designed for heavy-duty applications and are considered for **OFF-ROAD use only**. The owner takes full responsibility for all safety and legal issues if used on road. It is the owner's responsibility to check with all state and local laws if intended for street use. It is the owner's responsibility to supply side marker lamps if desired.

Before installing fenders please read instructions completely. It is important not to completely disassemble the front clip of your Jeep® for this installation. If both fenders are removed at the same time alignment of all front end components will be affected and proper fitment will be compromised. **Install one side at a time for proper fitment.**

## Installation instructions

**Step (1):** Place vehicle in gear, or park, set emergency brake, and block tires.

**Step (2):** Raise hood and secure with prop rod.

**Step (3):** Disconnect battery and remove from vehicle.

**Step (4):** Choose original fender to be removed. It does not matter what side. Disconnect all side marker and front turn signal bulbs (**fig.1**). Fish all lighting wires back through inner fender before removal. (**fig.2**). **DO NOT REMOVE BOTH FENDERS. ONLY DO ONE SIDE AT A TIME.**

**Fig .1**



**Fig.2**



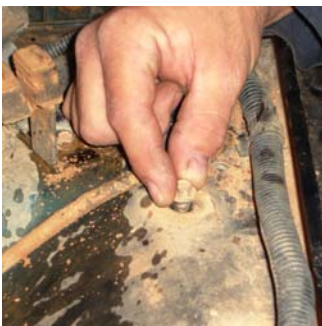
**Fig.3**



**Step (5):** Remove lower rubber mud flap if equipped. Do not discard as this can be reinstalled on new tube fenders. Rubber flap is important to help keep engine compartment cool and free of mud. (**Fig.3**)

**Step (6):** Remove accessories from inner fender. With items removed place bolts back into original holes as a guide for re-installment later (**Fig. 4**). Disconnect all terminating wire leads where needed. Disconnect wire bundle clips from fender (**Fig.5**). Items and wires can be placed away from fender onto engine if needed. Avoid damage to these components.

**Fig.4**



**Fig.5**



**Fig.6**



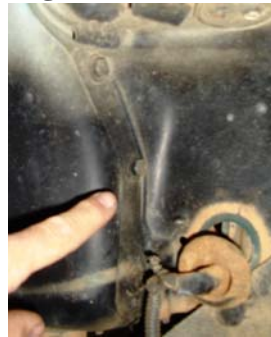
**Step (7):** On passenger side remove the top of the battery tray to remove module located underneath.

**Step (8):** Each fender is held into place by (4) bolts located along the back firewall (**Fig.7**), by (3) bolts inside fender attached to back of grille (**Fig.8**), by (3) bolts located inside fender on the side of the grille (**Fig.9**), and by (4) bolts located on the backside of inner fender (**Fig.10**). Remove all bolts and keep for the re-installment of the H/D tube fender. **REMEMBER TO ONLY DO ONE SIDE AT A TIME. DO NOT REMOVE BOTH FENDERS AT THE SAME TIME.**

**Fig.7**



**Fig.8**



**Fig.9**



**Fig.10**



Please note that on some early 1997-1998 TJ's an additional bolt is located on the top of the fender and attaches to the grille. No hole is provided in new tube fenders.

**Step (9):** With the help of another person remove old fender from vehicle. Double check To make sure all accessories and wires have been disconnected.

**Step(10):** Install new fender with the help of another person. The fitment of the fender might be slightly tight and the pushing of the grille forward will help in sliding the new fender into place. With mounting hole aligned start one bolt in each location to secure fender to vehicle **DO NOT TIGHTEN (Fig. 11 -12)**. start all (14) bolts into the 4 different mounting points (see fig. 7,8,9,and 10). NOTE: some hole alignments might require the use of a hole drift or Phillips head screwdriver to allow the starting of bolts. With all bolts started tighten while checking fitment and alignment at all attachment points (**fig.13**). When it is felt the fender is properly aligned to original specs tighten all bolts.

**Fig. 11**



**Fig. 12**



**Fig.13**



**Step(11):** Reinstall all accessories and wires as described above. Reverse steps 10-1.

**Step(12):** Repeat for other side. **DO NOT REMOVE BOTH FENDERS AT THE SAME TIME.**

With fenders installed check all bolts for tightness and make any adjustment needed to properly align body panels. Close hood and check for proper fitment and locking of safety latch. Remove hook latches from old fenders and install into new holes supplied in replacement H/D tube fenders.

The optional front turn signal bracket allows you to move the side marker lamps from the fender fares to the front of the tube fender. The left marker lamp will be used on the right side and the right marker to the left side. The bracket is designed as a compression fitting and requires just one bolt to install (**Fig. 14 -15**). Slide marker light into place and secure using the original keeper nut used to hold it in place in the fender flare. Some splicing and wiring will be needed to add side markers if desired. These side marker lamps are not supplied in this kit. This kit has been designed for Off-Road use only.

**Fig.14**



**Fig. 15**



**NOTE:** great effort has been taken to produce a quality product with few visual defects in the metal work. Some final body work to fender may be required if painted to match Jeep®.