



3651 N Highway 89 • Chino Valley, AZ 86323
(928) 636-7080 • www.p-a-g.net

JEEP WRANGLER 2 & 4 DOOR ROCK SLIDER REAR BUMPER WITH LED BACK-UP LAMPS INSTALLATION INSTRUCTIONS 2007-2012 KIT# 83218

⚠ WARNING

Before you install this kit, read and understand all instructions, warnings, cautions, and notes in this instruction sheet and in the vehicle owner's manual.

⚠ CAUTION

Proper installation of this kit requires knowledge of the factory recommended procedures for removal and installation of original equipment components. We recommend that the factory shop manual and any special tools needed to service your vehicle be on hand during the installation. Installation of this kit without proper knowledge of the factory recommended procedures may affect the performance of these components and the safety of the vehicle. We strongly recommend that a certified mechanic familiar with the installation of similar components install this kit.

⚠ WARNING

Many states and municipalities have laws restricting bumper heights and vehicle lifts. Consult state and local laws to determine if the changes you intend to make to the vehicle comply with the law.

⚠ WARNING

Always wear eye protection when operating power tools.

⚠ WARNING

Before you install this kit, block the vehicle tires to prevent the vehicle from rolling.

NOTE

Performance Automotive Group recommends using the Loctite® supplied in the kit on the threads of all kit nuts and bolts unless specified otherwise in these instructions.

Before Starting Installation

NOTE

Kit parts are prefaced by the word *kit* and appear in **bold print**.

1. Carefully read all warnings and instructions completely before beginning.
2. Verify all parts have been received in this kit by checking the parts list at the end of this document.

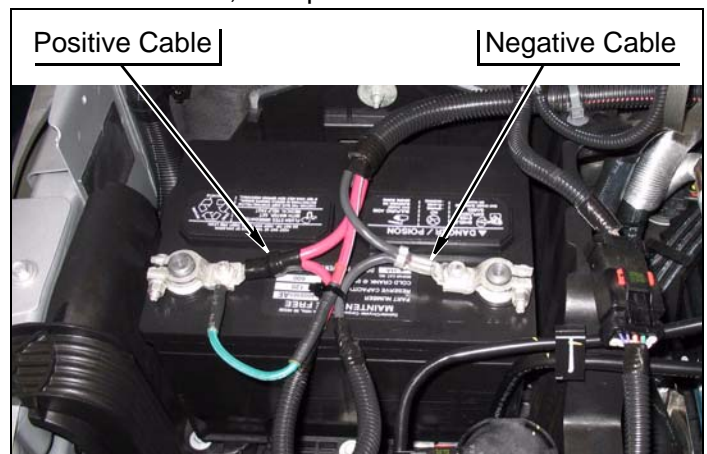
NOTE

If parts are missing from kit, please be prepared to provide the following information:

1. **Name** of purchase location
 2. **Bar Code** on side of box
 3. **Date** above bar code
 4. **Date** inside box cover
 5. **Inspector #** from inside box cover
3. **Only install this kit on the vehicle for which it is specified.** If anytime during the installation you encounter something different from what is outlined in the instructions, call technical support at (928) 636-7080.
 4. Park vehicle on a clean, dry, flat, level surface and block tires so vehicle cannot roll in either direction.

Engine Compartment

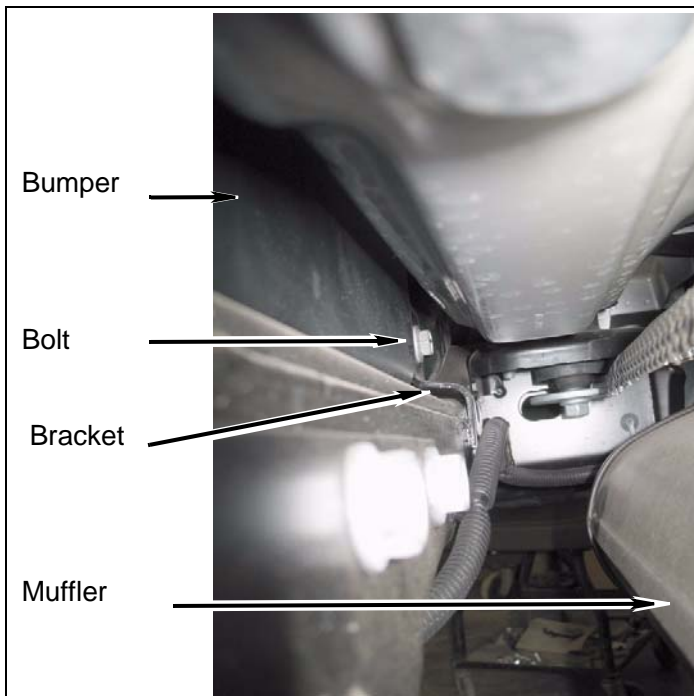
Disconnect both battery cables. Disconnect negative cable first, then positive cable.



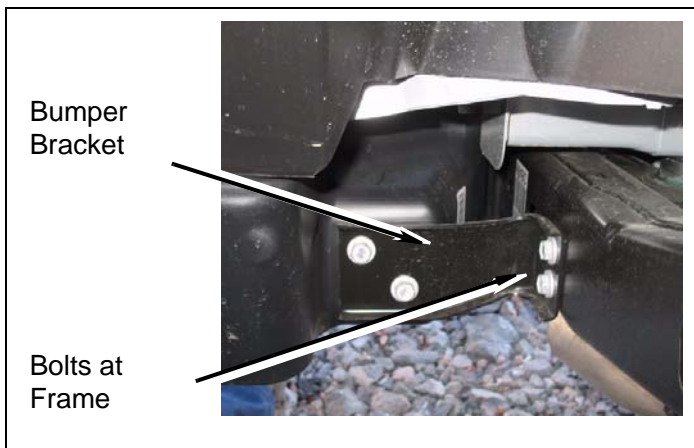
Rear Bumper

1. Remove Factory Bumper

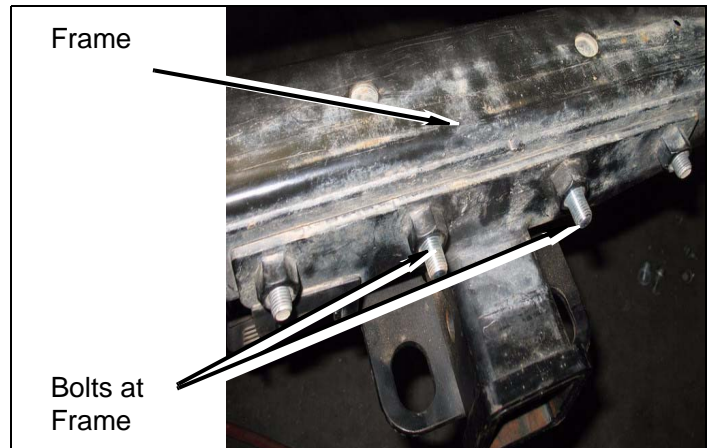
- a. Remove two bolts from brackets on back side of bumper.



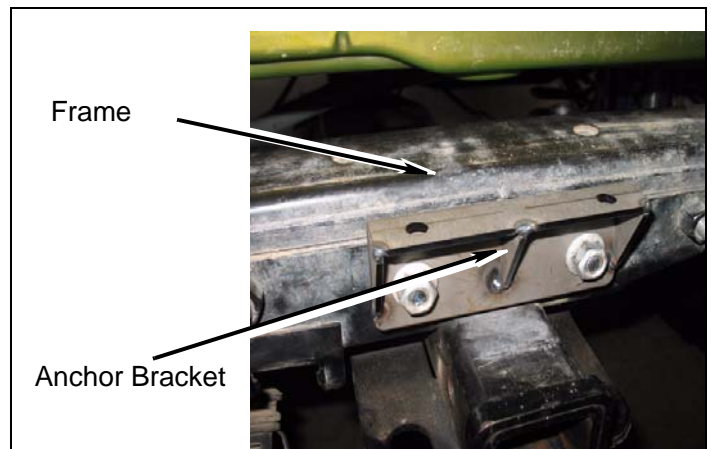
- b. Remove two bolts from each bumper bracket at frame and remove bumper.



- a. Remove two center 12mm bolts from factory hitch mount or tow hook and replace bolts with two **kit bolts (12m-1.5x120mm)** and two **kit washers (12m)**..

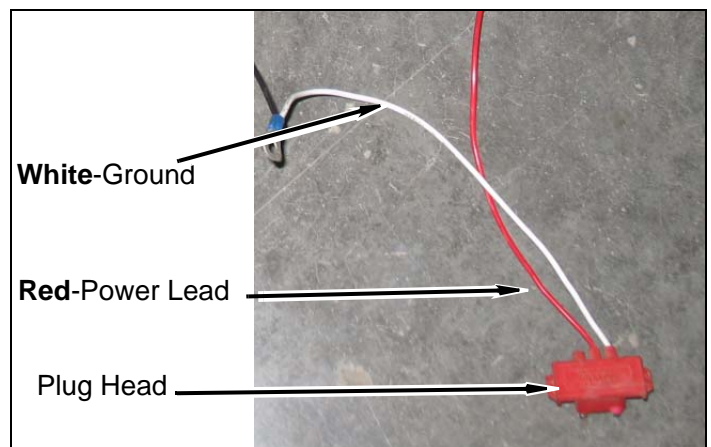


- b. Install **kit anchor bracket** with two **kit flange nuts (12m-1.5)**. Center **kit anchor bracket** flush with the mounting surface and tighten down **kit flange nuts**..



2. Wiring & Installing **Kit Light Harness**

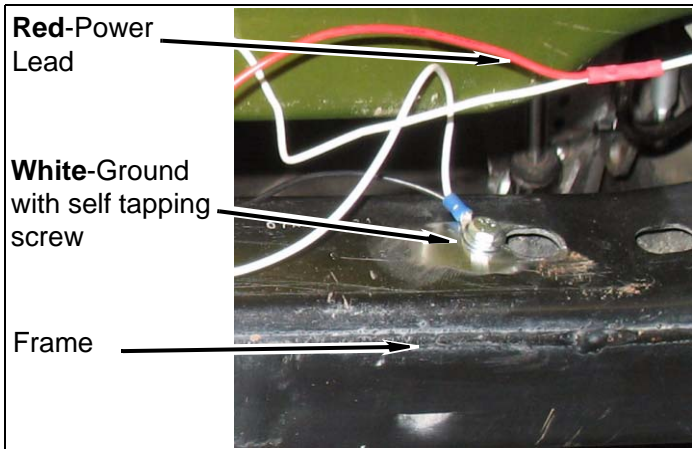
- a. Prepare wiring harness with two **kit plugs** provided. (**Note:** Black wire **will not** be used in this application; you may remove it from **kit plug** by cutting it at the base of the **kit plug**.) .



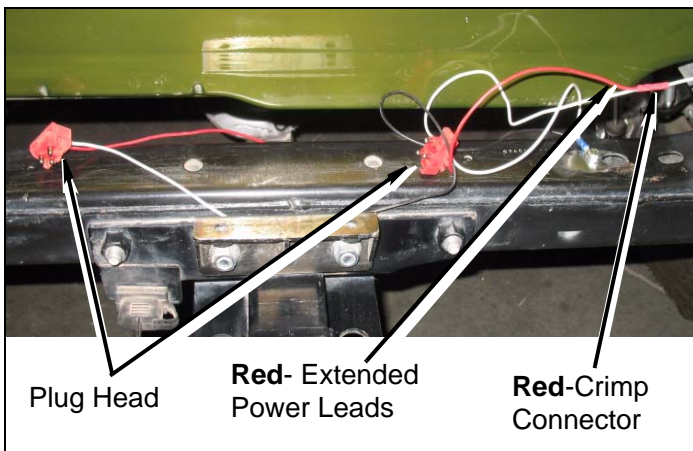
INSTALL REAR BUMPER

1. Rear Bumper **Kit Anchor Plate**

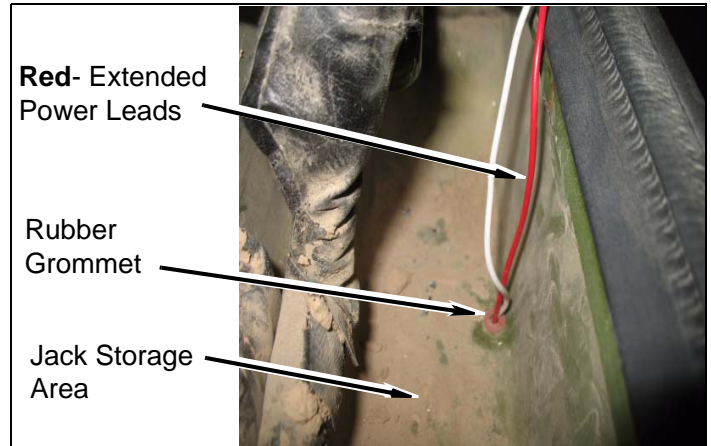
- b. Prepare frame for ground wires by removing a small section of paint to provide a good ground to harness. Use *kit self tapping screw* to ground the white wire on plug. (**Note:** Be sure that plug harness locations are near the inside of frame rails to give them enough slack to reach the light pockets once installed.) .



- c. Use *kit red-crimp connector* and *supplied wire* to extend and connect both red positive leads to each other with plenty of slack in the harness to reach upper passenger side factory tail light harness underneath carpet near roll bar.

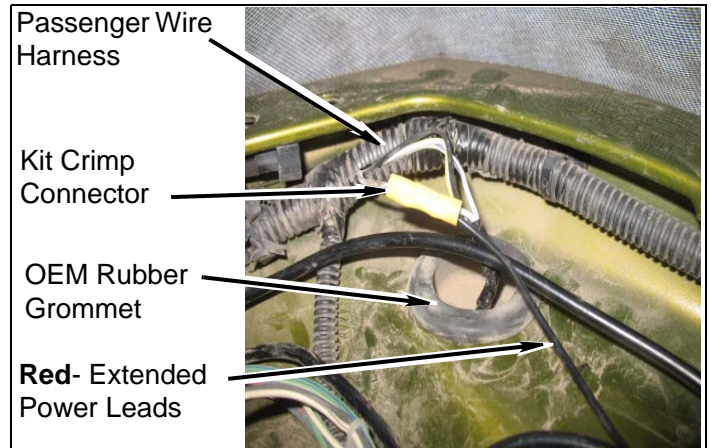


- d. Drill **5/16"** **wire access hole** through sheet metal in passenger side lower jack storage area. Place *kit 5/16"* **rubber grommet** into hole and feed power wire through *kit rubber grommet* .



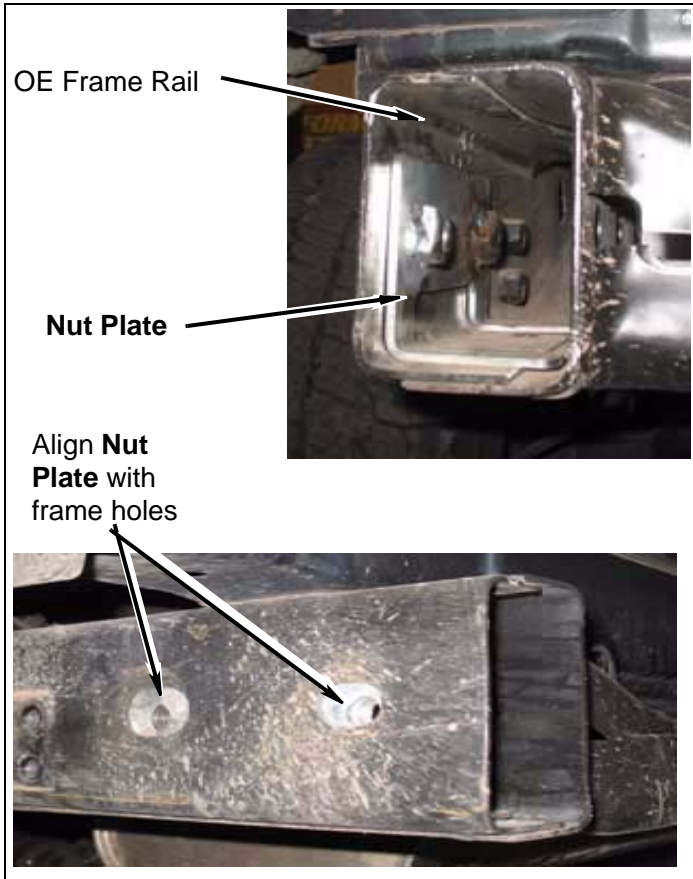
- e. Feed *kit power wire* underneath carpet until you reach tail light harness near passenger side roll bar. Remove tape and find positive tail light wire to splice in *kit power wire(s)*. (**Note:** In most JK's the backup wire is *White-Gray Stripe*. *Probing may be required* Be sure that your battery is reconnected before probing wires.)

- f. Use *kit crimp connector* to splice your power wires into correct backup wire.

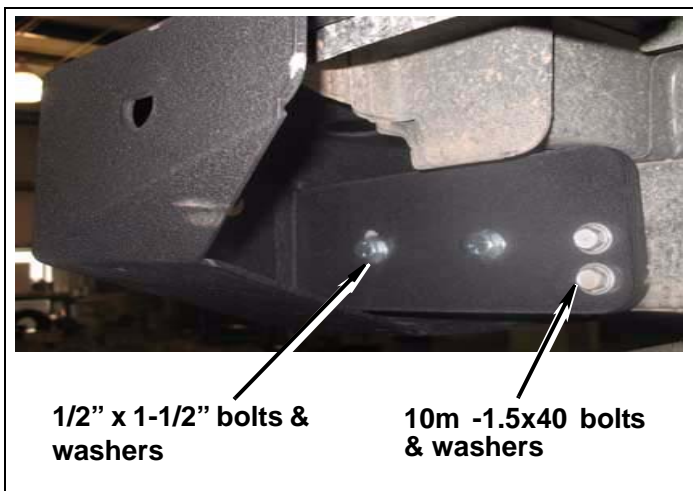


3. Mounting *Kit Bumper Assembly*

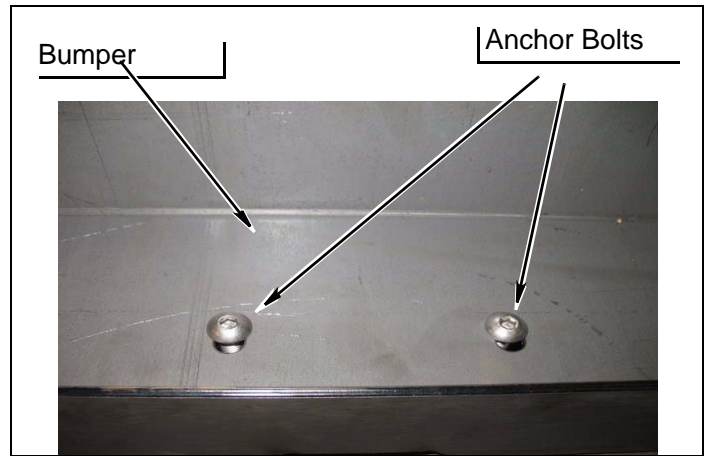
- a. Position *Kit Nut Plate* inside both pass and drv frame rail so that nuts line up with holes as shown.



- b. Position *kit bumper* on vehicle. Secure bumper to frame rail on both sides using *kit, 10m-1.5x40 bolts & washers*, for forward two holes and *kit 1/2" x 1-1/2" bolts & 1/2" washers* through *nut plate* inside frame rail. Do not tighten at this time.



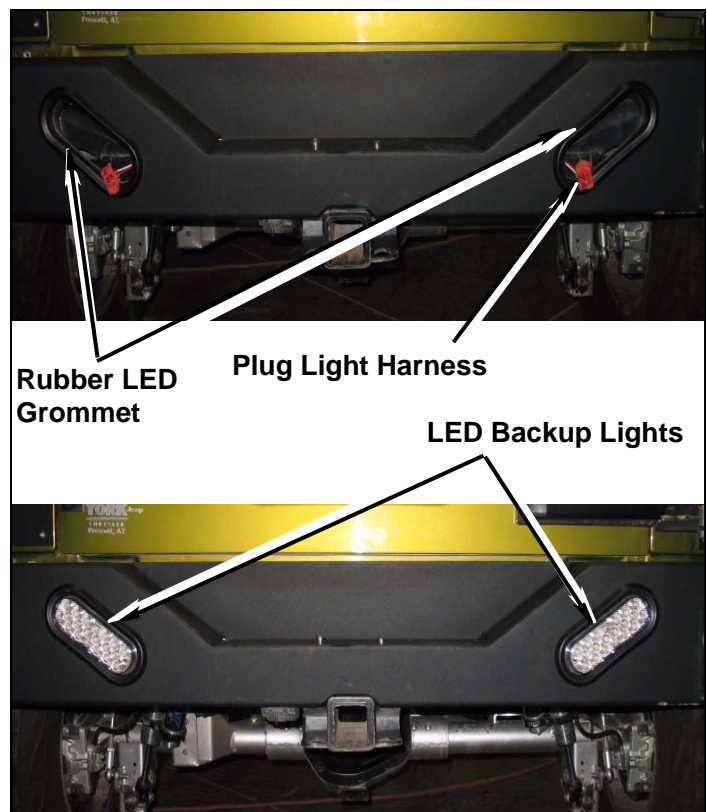
- c. Install two *kit bolts (3/8-16x1)* through bumper center plate and into *kit anchor bracket*.



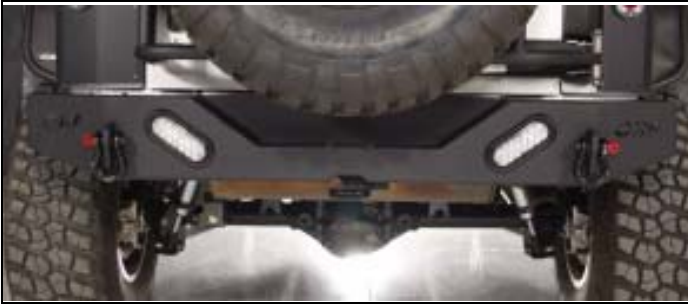
- d. Insure bumper is centered and level. Tighten down all hardware at this time.

4. Install *Kit LED Backup Lights*

- a. Use *kit LED grommet* and press grommet into cutout of bumper. Pull each *kit plug* through grommet.
- b. Plug wire harness into *kit LED backup light* and gently install light into *kit LED grommet*. (**Note:** Soap and water mixture will help light slide into place properly without damaging backup light. Allow soap and water to dry before making final light adjustments).

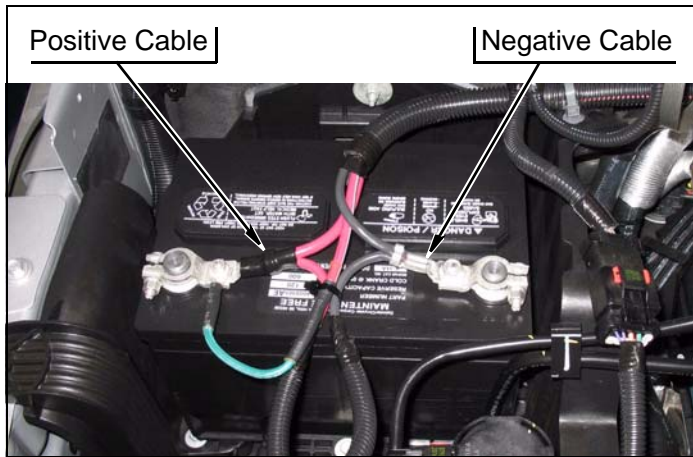


Finished Results



Engine Compartment

1. Connect both battery cables. Connect positive cable first, then negative cable.



Miscellaneous

1. Check all fasteners to ensure they are tight.

⚠WARNING

Retorque all fasteners after 500 miles and after off road use. All body lift components should be visually inspected and fasteners retorqued during routine vehicle servicing.

NOTE

All warranty information, instruction sheets, and other documents regarding the installation of this product must be retained by the vehicle owner. Information contained in the instructions and on the warranty card will be required for any warranty claims. The vehicle owner needs to understand the modifications made to the vehicle and how they affect vehicle handling and performance. Failure to provide the customer with this information can result in damage to the vehicle and severe personal injury.

Kit Parts List

Qty. Description

- 1 **Bumper**, Rear Main
- 1 **Bracket**, Center Rear Anchor Plate
- 2 **Lights**, LED Backup
- 2 **Grommet**, LED Light
- 2 **Plug**, LED Harness

1 **83208 (Hardware bag kit)**

- 4 **Bolt**, 1/2" x 1 1/2"
- 2 **Bolt**, 3/8" x 1"
- 2 **Bolt**, 12m-1.5 x 120
- 4 **Bolt**, 10m-1.5 x 40
- 2 **Screw**, Self Tapping
- 2 **Nut**, 12m-1.5 Flange
- 2 **Bracket**, Nut Plate
- 4 **Washer**, 1/2" USS
- 4 **Washer**, 10mm
- 1 **Grommet**, 5/16"
- 4 **Connector**, Red Crimp
- 1 **Wire**, 6 ft.

2 **D-Rings**