



INSTALLATION INSTRUCTIONS

FRONT BUMPER PART #15200
1976-2001 JEEP CJ/ YJ/ WRANGLER 2/4WD

PARTS LIST

(1) FRONT BUMPER

PROCEDURE

1. If vehicle is equipped with a stock front bumper, remove using a size 55 star socket.
2. Place Front Bumper over vehicles frame rails, as shown in figure 1.2, and secure using the same factory bolts and washers. Hand tighten.
3. Adjust Front Bumper so that it is centered on the vehicle and tighten all hardware to complete installation.

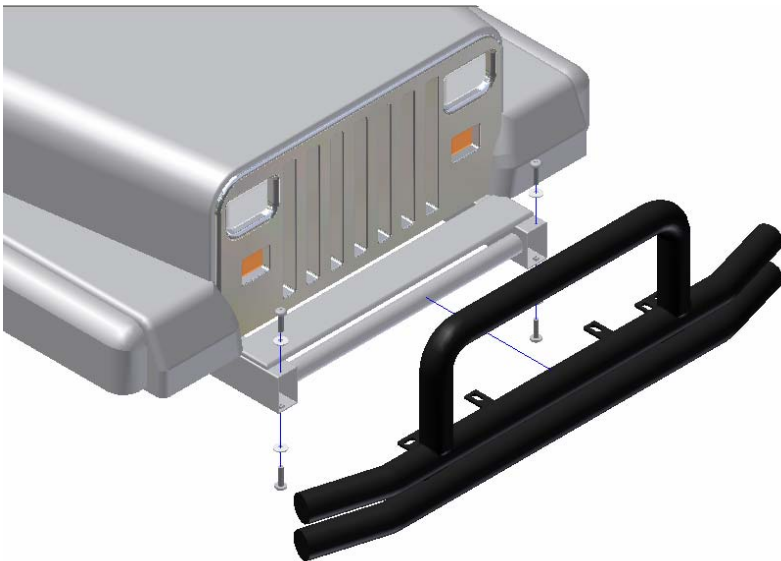


Figure 1.1 - Front Assembly Exploded View



Figure 1.2 – Complete Front Assembly View