



3651 N Highway 89 • Chino Valley, AZ 86323  
(928) 636-7080 • www.p-a-g.net

## **JEEP CJ BUSHING KIT INSTALLATION INSTRUCTIONS 1980-1986 KIT #19004**

### **⚠ WARNING**

Installation of a Performance Automotive Group kit will change the vehicle's center of gravity and handling characteristics both on- and off-road. You must drive the vehicle safely! Extreme care must be taken to prevent vehicle rollover or loss of control, which could result in serious injury or death. Avoid sudden sharp turns or abrupt maneuvers and always make sure all vehicle occupants have their seat belts fastened.

### **⚠ WARNING**

Before you install this kit, read and understand all instructions, warnings, cautions, and notes in this instruction sheet and in the vehicle owner's manual.

### **⚠ CAUTION**

Proper installation of this kit requires knowledge of the factory recommended procedures for removal and installation of original equipment components. We recommend that the factory shop manual and any special tools needed to service your vehicle be on hand during the installation. Installation of this kit without proper knowledge of the factory recommended procedures may affect the performance of these components and the safety of the vehicle. We strongly recommend that a certified mechanic familiar with the installation of similar components install this kit.

### **⚠ WARNING**

DO NOT combine suspension, body, or other lift devices. Use of vehicle with combined lifts may result in unsafe and/or unexpected handling characteristics.

### **⚠ WARNING**

This kit should only be installed on a vehicle that is in good working condition. Before you install the kit, thoroughly inspect the vehicle for corrosion or deformation of the sheet metal around the factory body mounts. If the vehicle is suspected to have been in a collision or misused, do not install this kit. Off-road use of your vehicle with this kit installed may increase the stress applied to the factory body mounts. We do not recommend that any vehicle with a Performance Automotive Group kit installed be involved in any extreme off-road maneuvers such as jumping. Failure to observe this warning may result in serious personal injury and/or severe damage to your vehicle.

### **⚠ WARNING**

Many states and municipalities have laws restricting bumper heights and vehicle lifts. Consult state and local laws to determine if the changes you intend to make to the vehicle comply with the law.

### **⚠ WARNING**

The installation of larger tires may reduce the effectiveness of the braking system.

### **⚠ WARNING**

Always wear eye protection when operating power tools.

### **⚠ WARNING**

Before you install this kit, block the vehicle tires to prevent the vehicle from rolling.

### **⚠ WARNING**

Accidental deployment of the air bag can result in serious personal injury or death. To avoid accidental deployment during installation of the kit, the Supplemental Restraint System (SRS, or airbag) must remain deactivated. Do not allow anyone near the airbag during installation. Refer to the factory service manual or owner's manual for the recommended procedure to disable the SRS. After you install the kit, reactivate the SRS before driving the vehicle.

### **NOTE**

Performance Automotive Group recommends using the Loctite® supplied in the kit on the threads of all kit nuts and bolts unless specified otherwise in these instructions.

## A. Before you start.

### ⚠NOTE

Keep track of hardware quantity and position. Note for re-use quantity and position of any shims. Note that the part number in the text matches the corresponding part number in the art. Kit parts are prefaced by the word *kit* in italics.

1. Read all warnings and instructions completely and carefully before you begin.
2. Check to make sure the kit is complete (refer to the Parts List, section E).
3. Only install this kit on the vehicle for which it is intended.

## B. Get ready to install the kit.

1. Spray a generous quantity of your favorite rust buster on all nuts and bolts to be removed. Do this the day before you perform the installation. Depending on the age of the vehicle, it may be necessary for you to repeat this several times so as not to break bolts when you attempt to free them.
2. Park the vehicle on a clean, dry, flat, level surface and block the tires so the vehicle cannot roll in either direction.
3. Disconnect both battery cables, negative cable first, then the positive cable.

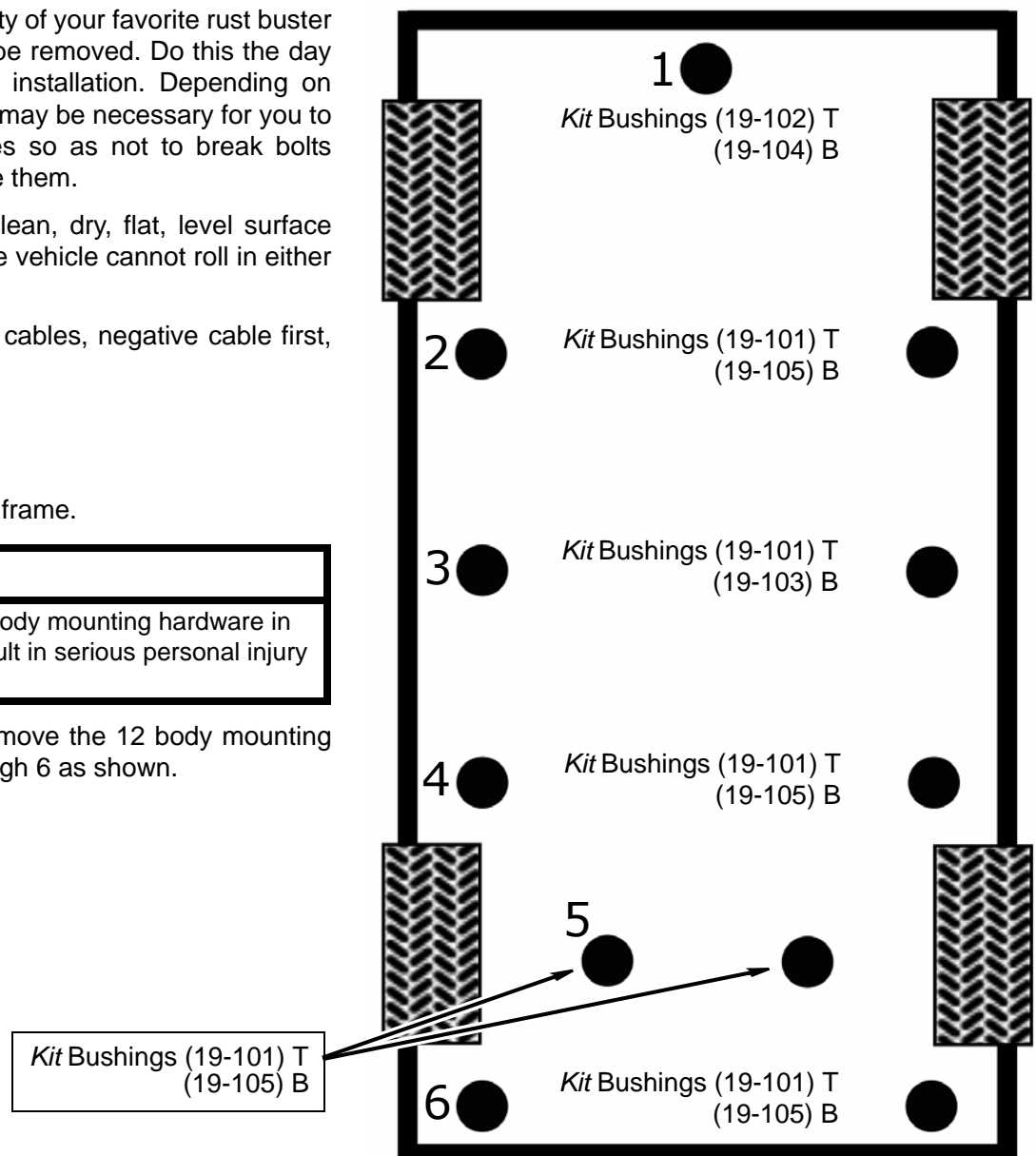
## C. Install the kit.

1. Prepare to lift body from frame.

### ⚠WARNING

Failure to replace the OEM body mounting hardware in the stock locations could result in serious personal injury or damage to the vehicle.

- a. Loosen but do not remove the 12 body mounting bolts at positions 1 through 6 as shown.



### ⚠WARNING

Use extreme caution when lifting body from frame. Ensure lifting device is securely placed. Keep hands out from between frame and body, or serious personal injury could result. Only raise body high enough to replace bushings.

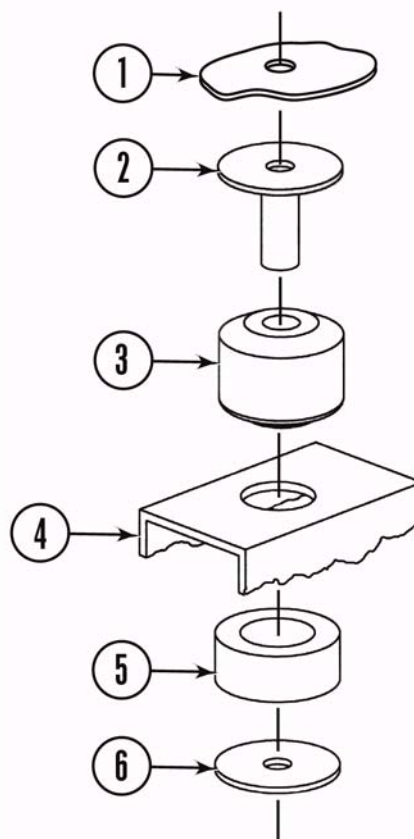
### ⚠CAUTION

Check fan shroud to fan clearance. Continually check hoses, wires, lines, etc. to be sure that everything is flexing properly and not binding, or damage to the vehicle could result. Be especially careful of the a/c hoses at the firewall, the belt pulley, and at the core support.

### ⚠NOTE

When jacking up body use a long enough 2 x 4 or 4 x 4 to ensure support. Never position jack directly on body panels.

2. Remove the six body mounting bolts from passenger side positions as shown. Clean threads of bolts.
3. Lift body and install body passenger side replacement bushings.
  - a. Using a hydraulic jack and a wooden block, slowly lift the body passenger side just high enough to access the stock bushings on the frame mounting pads.
  - b. Remove and discard the stock bushings.
  - c. Position *kit* bushings, washers, and sleeves on the frame mounting pads as shown. Do not tighten.
  - d. Lower body on the *kit* bushings.
  - e. Install *kit* bushings with six stock body mounting bolts. Do not tighten.



#### Position 1

1. Body
2. Factory washer/sleeve
3. *Kit* 19-102 bushing
4. Frame
5. *Kit* 19-104 bushing
6. Factory washer

#### Position 2, 4, 5, 6

1. Body
2. Factory washer/sleeve
3. *Kit* 19-101 bushing
4. Frame
5. *Kit* 19-105 bushing
6. Factory washer

#### Position 3

1. Body
2. Factory washer/sleeve
3. *Kit* 19-101 bushing
4. Frame
5. *Kit* 19-103 bushing
6. Factory washer

4. Install the body driver's side bushings.
  - a. Repeat steps C. 3. a. through e. for the body driver's side.
5. Finish the body bushing installation.
  - a. Adjust body to bed clearance using the measurements from step C. 1. a.
  - b. Remove the 12 body mounting bolts one at a time, coat threads with Loctite®, and reinstall. Tighten to 85 ft. lbs.

#### **D. After installation is complete.**

1. Connect both battery cables to the battery. Be sure to reconnect the positive cable first, then the negative cable.
2. Double check the vehicle.

#### **⚠CAUTION**

Retorque all fasteners after 500 miles. All components should be visually inspected and fasteners retorqued during routine vehicle servicing.

- a. Check all mounting hardware to ensure it is properly tightened.
- b. Check all wires, hoses, cables, etc. to ensure there is ample slack.
- c. Check vehicle electrical system.
- d. Test drive vehicle in all gears and 4 wheel drive ranges. Pay close attention to all vehicle systems. Check all hardware again in 500 miles and as part of your regular maintenance schedule.

#### **⚠NOTE**

All warranty information and instruction sheets regarding the installation of this product must be retained by the vehicle owner. Information contained in the instructions and on the warranty card is required for any warranty claims. Failure to provide the customer with this information can result in damage to the vehicle and severe personal injury.