

WeatherTech®

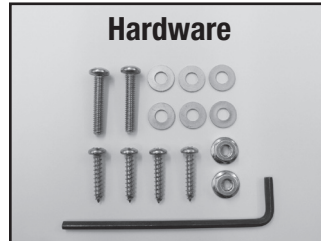
No-Drill MudFlap

Installation Instructions

Thank you for purchasing the WeatherTech® No-Drill MudFlap. Please read this installation guide to thoroughly familiarize yourself with the steps to install the MudFlap on your vehicle. When properly installed, the WeatherTech® No-Drill MudFlap will provide you with years of protection.



- Razor Knife
- Stubby Phillips Screwdriver
- 7/16" Wrench
- Phillips Screwdriver



- Parts Kit (P)**
- (4) #10 x 1" Phillips Head Sheet Metal Screws
 - (6) #12 Washers
 - (2) 12 x 24 x 1/4" Phillips Head Machine Screws
 - (1) 5/32" Long Arm Hex Key
 - (2) 12 x 24 Locknuts

⚠ WARNING ⚠

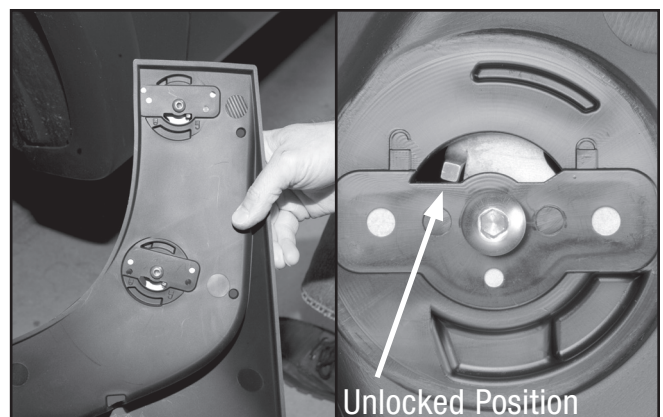
The MudFlap is designed to fit vehicles with standard size wheels and tires. Installation of MudFlaps on vehicles with aftermarket wheels or oversize tires may interfere with the MudFlap, will void the warranty and may damage the MudFlap or the vehicle.

- 1 Start by thoroughly washing your vehicle. Take care to remove all dirt, debris, and stains from each fender in the areas corresponding to where the MudFlaps will be installed.

- 2 Begin driver's side MudFlap installation by parking the vehicle on level ground with the wheels turned fully to the left.



- 3 Start the installation by locating the plastic rivet indicated. The rivet head will need to be cutoff and removed (also remove the inner portion, you can reach around for access).



- 4 Using the MudFlap marked "LH", ensure the QuickTurn™ fasteners are in the unlocked position.

[View Easy Installation Video](http://WeatherTech.com/install)
WeatherTech.com/install

Questions? Call customer service at 630 769 1500
Monday - Friday: 9 a.m. to 5 p.m. Central Time



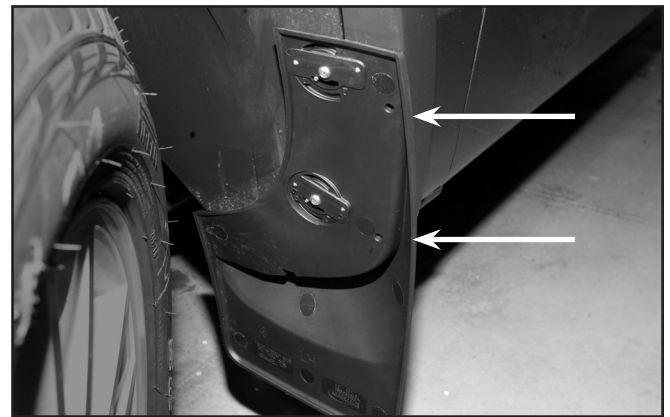
5 Using the supplied bolt and washer, position the MudFlap against the contour of the fender flare, and put the bolt through the opening in the MudFlap and then through the hole where the plastic rivet was. Place the supplied nut on the bolt threads. Do not tighten at this time.



6 While pressing the MudFlap against the fender contour, rotate the QuickTurn™ fastener with the supplied hex key. The fastener will rotate to the “lock” position and stop. Continue turning to tighten the flap onto the flare. Repeat for the other QuickTurn™ fastener.



7 The lower screw/bolt can now be tightened (nut on back may need to be held with a wrench).



8 Optionally, the (2) screws (with washers) can be used in the indicated holes (holes 1/8" will have to be drilled in the plastic flare, no metal will be contacted).



9 Begin passenger side installation by parking the vehicle on a level surface with the wheels turned fully to the right. Repeat steps 3-8.

Congratulations!

**Your new WeatherTech®
No-Drill MudFlaps have been installed!**

Your WeatherTech® No-Drill MudFlap carries a Lifetime Warranty against defects in materials and workmanship when installed correctly.

[View Easy Installation Video](#)
WeatherTech.com/install

**Questions? Call customer service at 630 769 1500
Monday - Friday: 9 a.m. to 5 p.m. Central Time**