

CJ Hood Louver Cut Template

Poison Spyder Customs, Inc.
www.poisonspyder.com
(951) 849-5911

DO NOT use this paper template to drill screw holes!
Use the metal Hood Louver as the drill guide (Steps 13 & 14)

Parts List

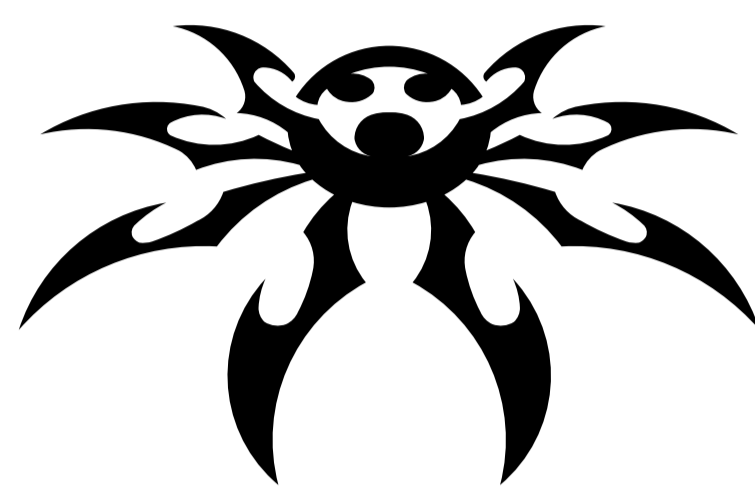
- (1) CJ Hood Louver Panel
- (1) Cut Template with Instructions (this sheet)
- (27) 10-24 X 3/4 SS button head cap screw
- (27) 10-24 nylon insert lock nut
- (27) #10 flat washer

Tools Needed

- Scissors & sharp hobby knife or razor blade
- Masking tape, straight edge, & fine-tip felt marker
- Automatic center-punch or punch and hammer
- Drill motor with 7/32" drill bit, 3/4" & 1" hole saws
- High speed cut-off wheel (electric or pneumatic)
- Anti-sieze compound
- 1/8" hex key (flat-end, NOT ball-end)
- 3/8" wrench or socket & ratchet
- Files, sandpaper or burr-knife
- Touch-up paint

Existing Windshield Loop Holes (Step 3)

Drill/Hole Saw Locations (Steps 7 & 9)



Existing Windshield Loop Holes (Step 3)

Drill/Hole Saw Locations (Steps 7 & 9)

Existing Windshield Loop Holes (Step 3)

Cut out template along dotted line (Step 2)

Inside Corner (Step 7 - punch/mark but do not drill)

Inside Corner (Step 7 - punch/mark but do not drill)

Installation Procedure

1. Remove hood from vehicle and place on table or sawhorses. Remove the three windshield loops.
2. Use scissors to cut around the outside edge of the template, following the dotted line that is one inch outside the heavy solid line that notes the edge of the actual metal hood louver piece.
3. Use a sharp hobby knife to cut out the "Existing Windshield Loop Holes" from this template. Try to cut down the centers of the heavy lines that depict these six holes, and remove the paper from inside the cuts.
4. Position the Cut Template onto the hood and place the Hood Louver on top of the Cut Template, using the Windshield Loop Hole locations to align both the Hood Louver and the Cut Template with the corresponding holes in the hood. Temporarily re-install the three Windshield Loops through the holes in the Hood Louver, Cut Template and the hood, to assist with proper alignment. Make sure the template is satisfactorily centered and aligned between the hood hinges, edges of the hood, etc. The edge of the Hood Louver should line up with the heavy solid line shown on the Cut Template.
5. Tape the Cut Template securely into place on the hood, using the 1" margin left protruding past the edge of the Hood Louver. Make sure it is fully taped along all edges so that it securely holds the Cut Template in place through the next steps.
6. Remove the three Windshield Loops, then remove the Hood Louver, leaving only the Cut Template taped to the hood.
7. Center-punch each of the 14 hole locations denoted with cross-hairs, plus the 2 Inside Corner locations denoted with X's. Use of an automatic center punch is recommended. If using a punch and hammer, be careful not to strike the punch too hard, as you risk deforming the surrounding sheetmetal.
8. Remove the tape and Cut Template from the hood.
9. Use a 1" hole saw to drill holes centered at each of the marked locations. Be very careful when drilling, as the sheetmetal is very thin and may want to "catch" on the hole saw.
10. Use straight edge and fine tip marker to draw a cut line around each of the hole cut-outs as shown in the template, by linking the outside edges of the 1" holes. At the two Inside Corner locations, simply mark from the outside edge of the adjacent holes to the Inside Corner location, as shown on the template.
11. Use a jigsaw with metal blade, pneumatic body saw, high-speed cutoff wheel, or cutting tool of your choice to cut along the cut lines made in the previous step. Use the cutoff wheel or a grinder to "round off" the sharp corners at the two Inside Corner locations.
12. Position the hood louver on to the hood, in the same position the template was in. Reinstall the three Windshield Loops, and tighten their fasteners to hold the hood louver in place.
13. Using the hood louver itself as the template, drill a 7/32" hole at each of the four corners and install a supplied button head cap screw, nut and washer at each of these locations. Use anti-sieze compound on the threads of the screws. Tighten them until snug but DO NOT OVER-TIGHTEN, as the threads of the stainless steel screws may gall. (DO NOT use this paper template for drilling the screw holes)
14. Drill the remaining 7/32" holes and install a screw, washer and nut in each location as you go, leaving them finger-tight.
15. Once all holes have been drilled, remove all hardware and the hood louver. Use a file or burr knife to de-burr all of the screw holes and cut edges.
16. Coat the bare metal around the cut edges and the screw holes with touch-up paint to prevent rust.
17. Re-install the Hood Louver using anti-sieze compound on the threads of each screw. Leave hardware finger-tight until all hardware is in place, then tighten the hardware in a crossing pattern, as if tightening the lug nuts on a wheel. Be careful not to over-tighten any of the screws/nuts, as over-tightening may deform the sheetmetal of the hood and/or louver.
18. Re-install the windshield loops.
19. Reinstall hood onto Jeep

DO NOT use this paper template to drill screw holes! Use the metal Hood Louver as the drill guide (Steps 13 & 14)

Overall dimensions of template outline should measure 32.04" X 36.625"